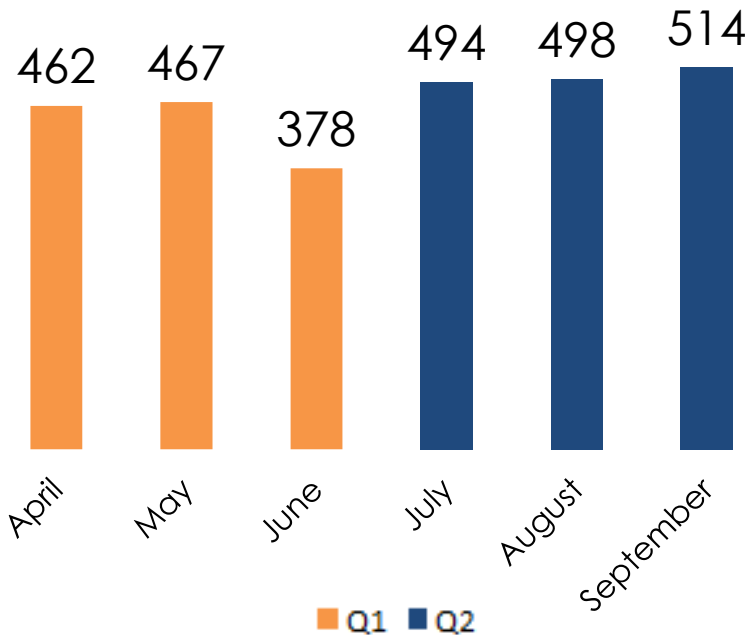


# Use of Force Analysis:

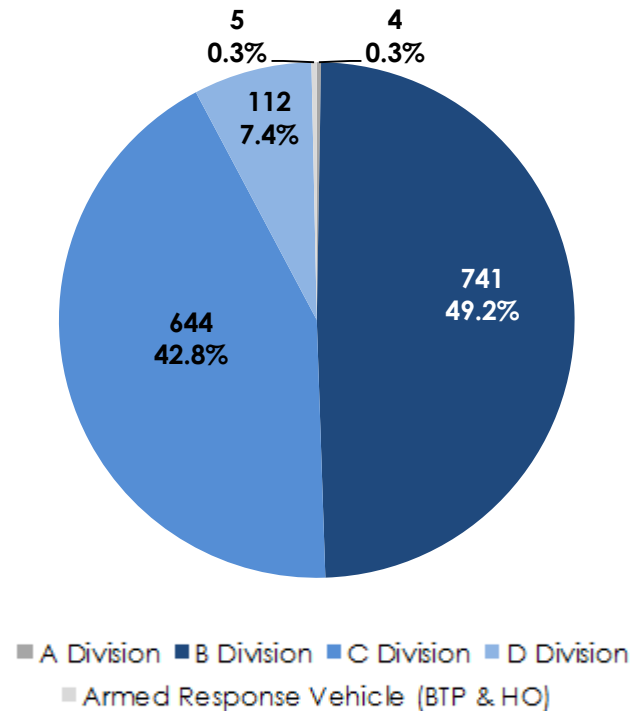
## Q2 2017/18

A total of **2813** use of force forms were submitted in the 6 month period.




1,506 Use of Force forms submitted for Q2 for BTP, compared to 1,307 submitted in Q1 – increase of 199 (15.2%)

**B Division** submitted the majority of forms, which is to be expected as 48% of BTP's officers, PCSOs and specials are based at this division.



# Officer profile

## Duty

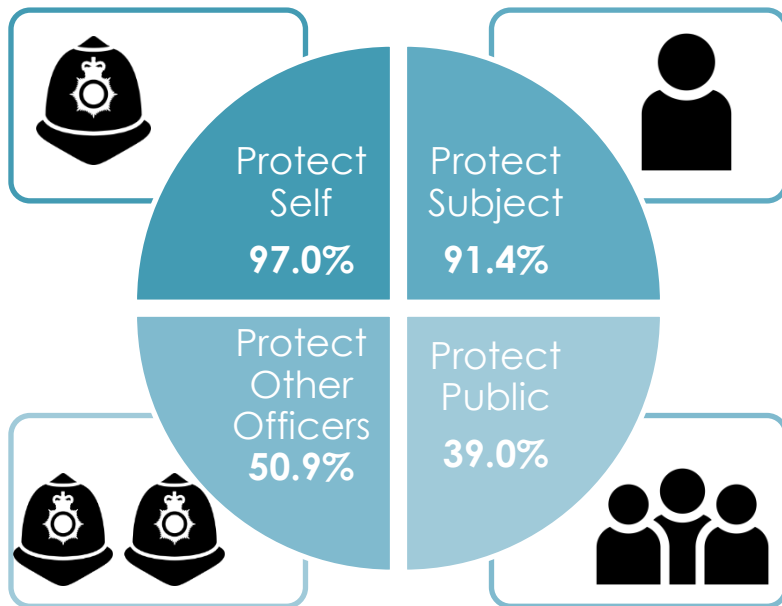
 **52%** of officers were on foot patrol and **34%** were on mobile patrol.



 **9%** of officers duties were patrolling solo.

## Reason for force

The majority of the time officers used force to protect themselves (97.0%) and/or to protect the subject (91.4%).



## Officer injury

Officer assaulted by subject: **8.8% (132)**

Officer spat at: **5.1% (77)**

Officer physically injured: **7.1% (107)**

### Intentional

Yes 57

No 50

### Injury level

Minor 103

Severe 4

Officer threatened with a weapon:

Yes **2.9% (43)**

No but intelligence suggested a weapon may have been present **3.1% (47)**

Officer assaulted with weapon: **Yes 0.6% (9)**

Less than 9% of officers were assaulted by the subject, and where there was a physical injury (107), the level of injury was mostly minor, but the injury was thought to be intentional (57).

# Tactics

## Officer C.E.D\*/TASER device trained/carried



Tactical communication was the most common type used (96.5%) followed by Handcuffing (compliant) (44.1%), and unarmed skills, for example physical restraint.

Despite C.E.D.s/TASER devices being carried in **27.0%** of use of force incidents, they were only used in **2.8%** of cases.

Tactic Deployed	Tactic used		Was used tactic effective?	
	Total	%	Yes	%
Tactical Communication	1454	97%	1002	68.9%
handcuffing (compliant)	664	44%	587	88.4%
Unarmed Skills	642	43%	278	43.3%
Handcuffing (non-compliant)	517	34%	281	54.4%
Ground Restraint	448	30%	214	47.8%
Limb/body restraint	196	13%	95	48.5%
Irritant Spray	119	8%	38	31.9%
Other / Improvised	66	4%	28	42.4%
Spit guard	53	4%	33	62.3%
Baton drawn	45	3%	17	37.8%
C.E.D	42	3%	21	50.0%
Baton used	14	1%	8	57.1%
Dog Deployed	6	0%	5	83.3%
Firearms	1	0%	N/A	0.0%
Dog biting	0	N/A	N/A	0.0%

### When irritant spray tactic used

Irritant spray	Total	%
Drawn	71	4.7%
Used	48	3.2%

BTP only use P.A.V.A Spray, not CS Spray

### When C.E.D/TASER device tactic used

C.E.D. (TASER device)	Total	%
Drawn	15	1.0%
Aimed	7	0.5%
Red dotted	16	1.1%
Arced	1	0.1%
Fired	4	0.3%

\*Conducted Energy Device: BTP use a TASER device

\*Fired contains 2 accidental (negligent discharge) fires of TASER device and 1 red dotted which was used in a non-forceful way.

# Subject profile

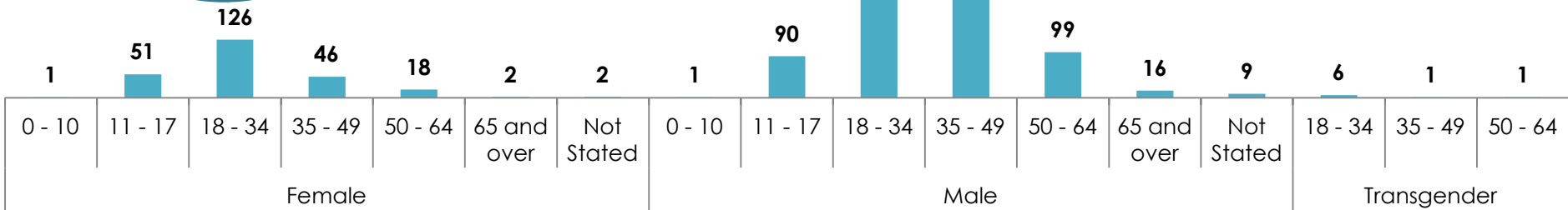
## Subject Age/Gender breakdown

## Subject perceived disability

75% of subjects were perceived as 'White', 15% 'Black (or Black British)' and 9% 'Asian', 'Chinese', 'mixed' or 'Other'. This largely follows the 'offender and suspect profile' of the Force

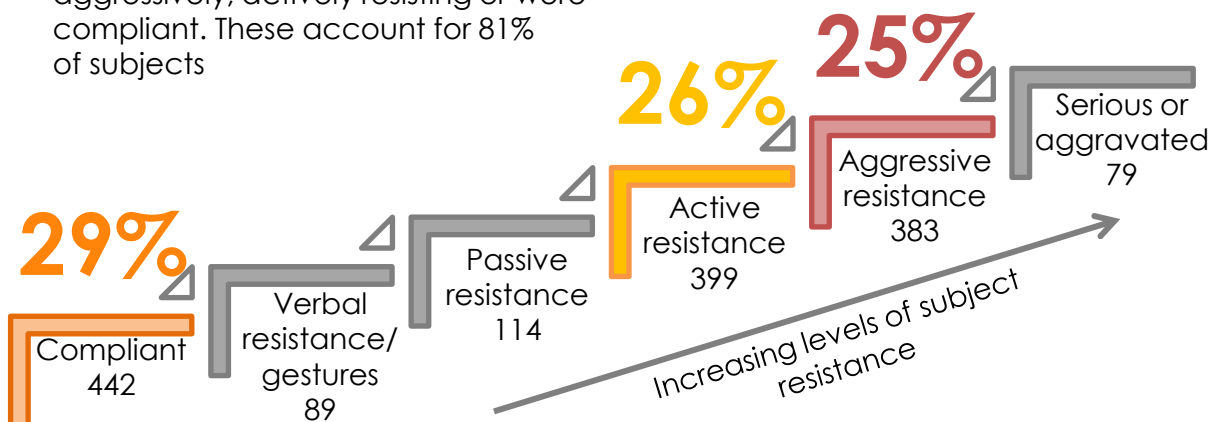
The most common subject profile is male between the age of 18-34 accounting for 46%

None	1356	<b>90.0%</b>
Emotionally or mentally distressed	126	<b>8.4%</b>
Physically disabled	19	<b>1.3%</b>
Both	5	<b>0.3%</b>



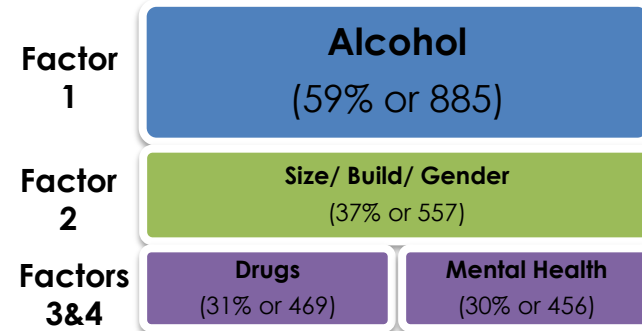
## Primary conduct of subject

Most commonly, subjects were resisting aggressively, actively resisting or were compliant. These account for 81% of subjects



## Impact factors

A maximum of nine impact factors affected officer use of force but were most affected by the four below



# Outcome of incident when force used

## Injuries of subject

5.7% of subjects were injured as a result of force used against them, the majority of injuries sustained were minor

### Subject injured as a result of Use of Force

No <b>1377</b>	Yes <b>88</b>	Unknown <b>41</b>
		<b>Nature of Injury</b>
		Minor 87
		Severe 1

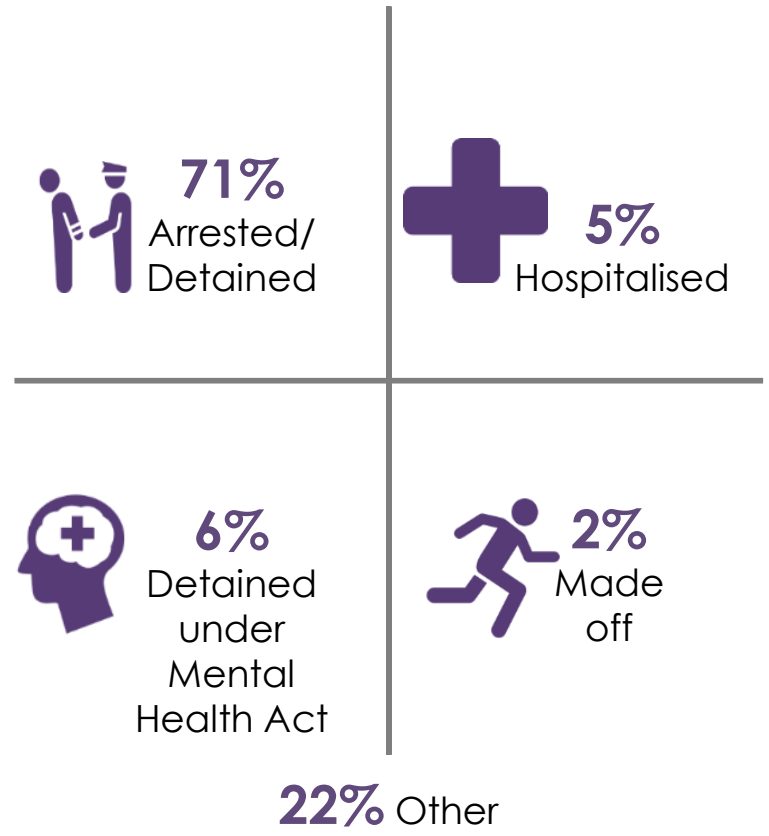
### Medical assistance offered

No <b>36</b>	Yes <b>52</b>
-----------------	------------------

### Medical assistance provided

No <b>36</b>	Yes <b>0</b>	No <b>23</b>	Yes <b>29</b>
-----------------	-----------------	-----------------	------------------

## Outcomes



No incidents resulted in a fatality