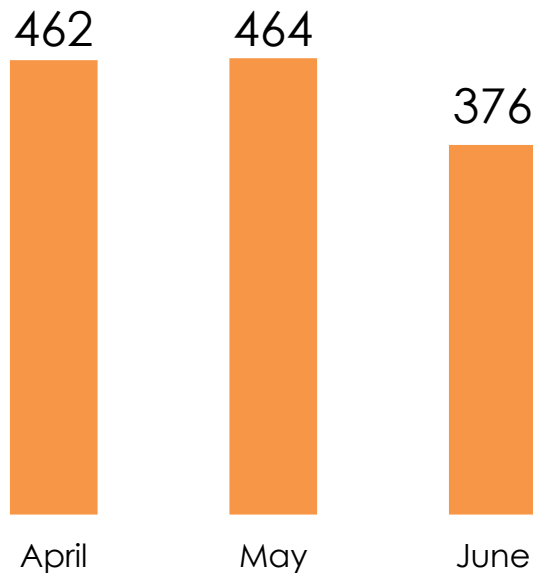


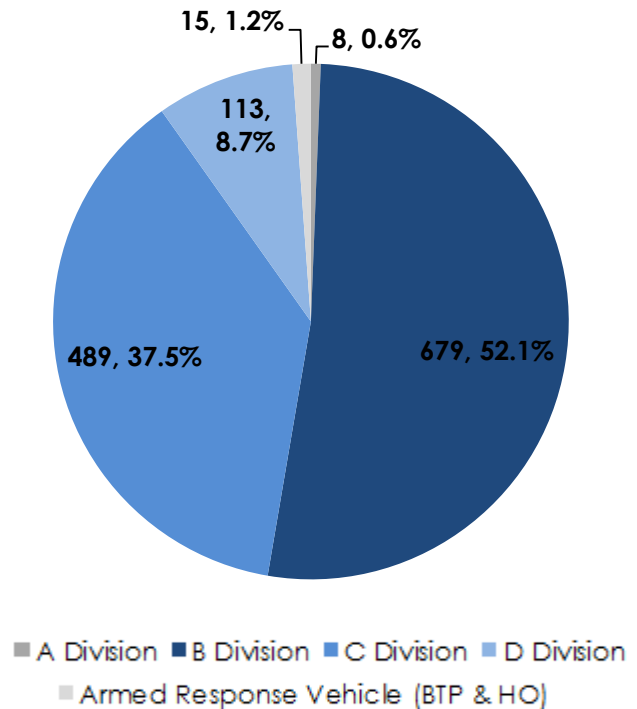
Use of Force Analysis:

Q1 2017/18

A total of **1304** use of force forms were submitted in the 3 month period.





B Division submitted the majority of forms, which is to be expected as 48% of BTP's officers, PCSOs and specials are based at this division.



Officer profile

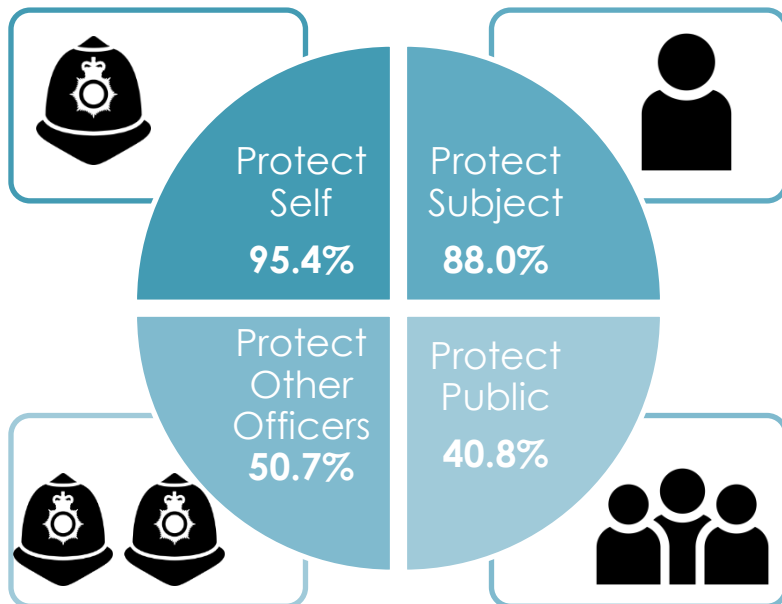
Duty

 **51%** of officers were on foot patrol and **31%** were on mobile patrol. 

 **11%** of officers duties were patrolling solo.

Reason for force

The majority of the time officers used force to protect themselves (95.4%) and/or to protect the subject (88%).



Reasons for use of force identified in more than 40% of forms

Officer injury

Officer assaulted by subject: **8.6% (112)**

Officer spat at: **5.2% (68)**

Officer physically injured: **7.8% (102)**

Intentional

Yes 56

No 46

Injury level

Minor 101

Severe 1

Officer threatened with a weapon:

Yes **3.8% (50)**

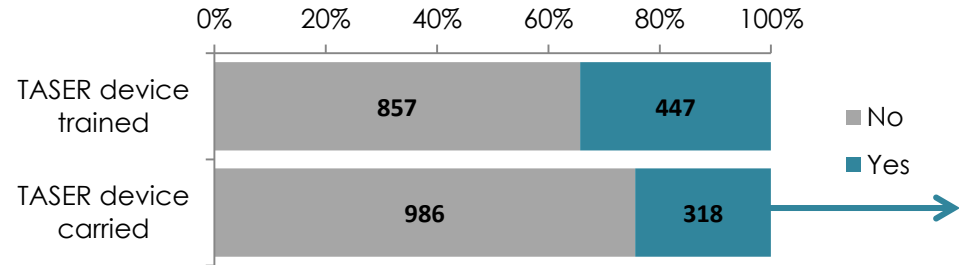
No but intelligence suggested a weapon may have been present **4.4% (57)**

Officer assaulted with weapon: **Yes 1.5% (19)**

Less than 9% of officers were assaulted by the subject, and where there was a physical injury (102), the level of injury was mostly minor, but the injury was thought to be intentional (56).

Tactics

Officer C.E.D*/TASER device trained/carried



Tactical communication was the most common type used (95.6%) followed by unarmed skills (44.7%), for example physical restraint.

Despite C.E.D.s/TASER devices being carried in **24.4%** of use of force incidents, they were only used in **2.6%** of cases.

| Tactic Deployed | Used | | Effective | |
|-----------------------------|-------|------|-----------|------|
| | No. | % | No. | % |
| Tactical communication | 1,246 | 95.6 | 805 | 61.7 |
| Unarmed skills | 583 | 44.7 | 276 | 21.2 |
| Handcuffing (compliant) | 520 | 39.9 | 462 | 35.4 |
| Handcuffing (non-compliant) | 476 | 36.5 | 270 | 20.7 |
| Ground restraint | 369 | 28.3 | 173 | 13.3 |
| Limb / Body restraints | 140 | 10.7 | 73 | 5.6 |
| Irritant spray | 74 | 5.7 | 31 | 2.4 |
| Baton drawn | 66 | 5.1 | 33 | 2.5 |
| Spit guard | 59 | 4.5 | 34 | 2.6 |
| Other / improvised | 44 | 3.4 | 17 | 1.3 |
| C.E.D/TASER device | 34 | 2.6 | 19 | 1.5 |
| Baton used | 14 | 1.1 | 10 | 0.8 |
| Dog deployed | 11 | 0.8 | 9 | 0.7 |
| Dog biting | 3 | 0.2 | 3 | 0.2 |

When irritant spray tactic used

| Irritant spray | No. | % |
|----------------|-----|------|
| Drawn | 33 | 2.5% |
| Drawn + used | 26 | 2% |
| Used | 15 | 1.2% |

BTP only use P.A.V.A Spray, not CS Spray

When C.E.D/TASER device tactic used

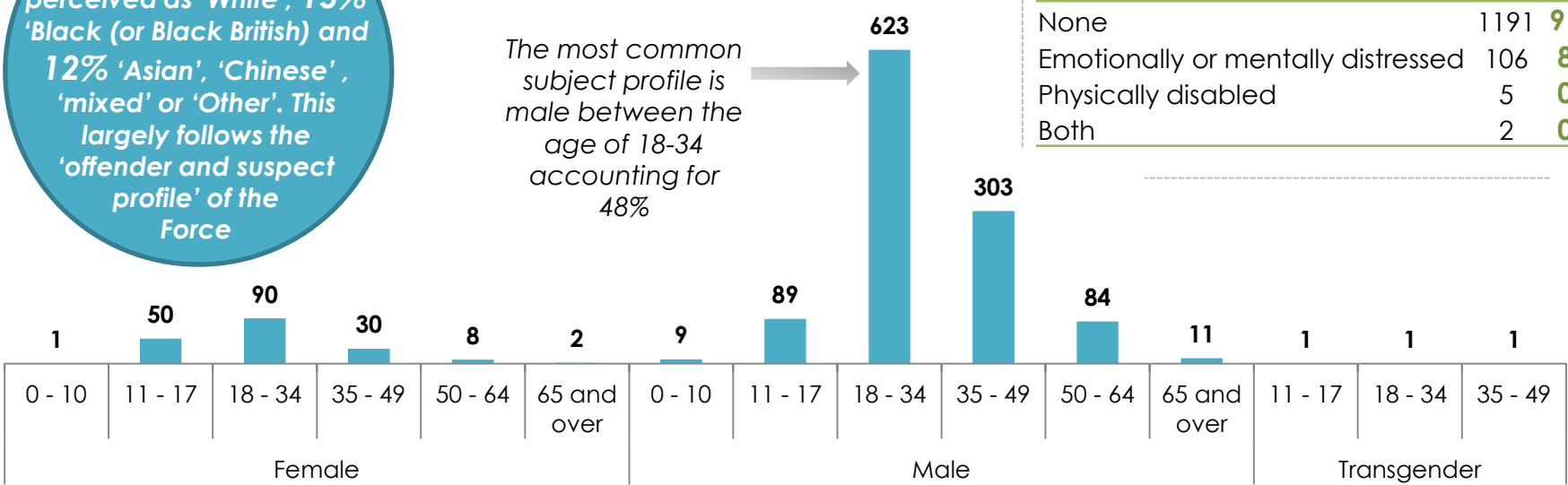
| C.E.D. (TASER device) | No. | % |
|------------------------------------|-----|------|
| Drawn | 12 | 0.9% |
| Drawn + aimed + red dotted | 11 | 0.8% |
| Drawn + aimed + red dotted + fired | 1 | 0.1% |
| Red dotted | 7 | 0.5% |
| Use not stated | 3 | 0.2% |

*Conducted Energy Device: BTP use a TASER device

Subject profile

73% of subjects were perceived as 'White', 15% 'Black (or Black British)' and 12% 'Asian', 'Chinese', 'mixed' or 'Other'. This largely follows the 'offender and suspect profile' of the Force

Subject age/gender breakdown

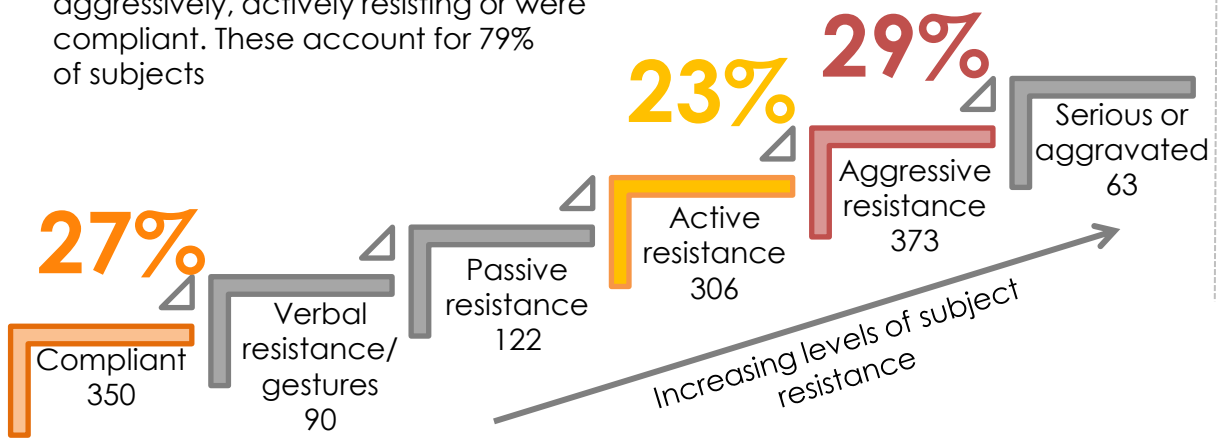


Subject perceived disability

| | | |
|------------------------------------|------|-------|
| None | 1191 | 91.3% |
| Emotionally or mentally distressed | 106 | 8.1% |
| Physically disabled | 5 | 0.4% |
| Both | 2 | 0.2% |

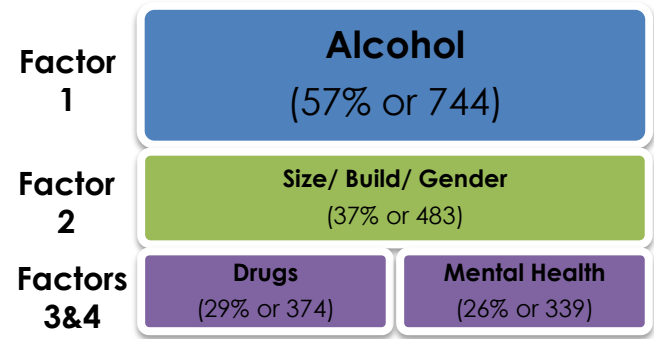
Primary conduct of subject

Most commonly, subjects were resisting aggressively, actively resisting or were compliant. These account for 79% of subjects



Impact factors

A maximum of nine impact factors affected officer use of force but were most affected by the four below



Outcome of incident when force used

Injuries of subject

6.5% of subjects were injured as a result of force used against them, the majority of injuries sustained were minor

Subject injured as a result of Use of Force

| | | |
|-------------------|------------------|-------------------------|
| No 1193 | Yes 78 | Unknown 33 |
| | | Nature of Injury |
| | | Minor 77 |
| | | Severe 1 |

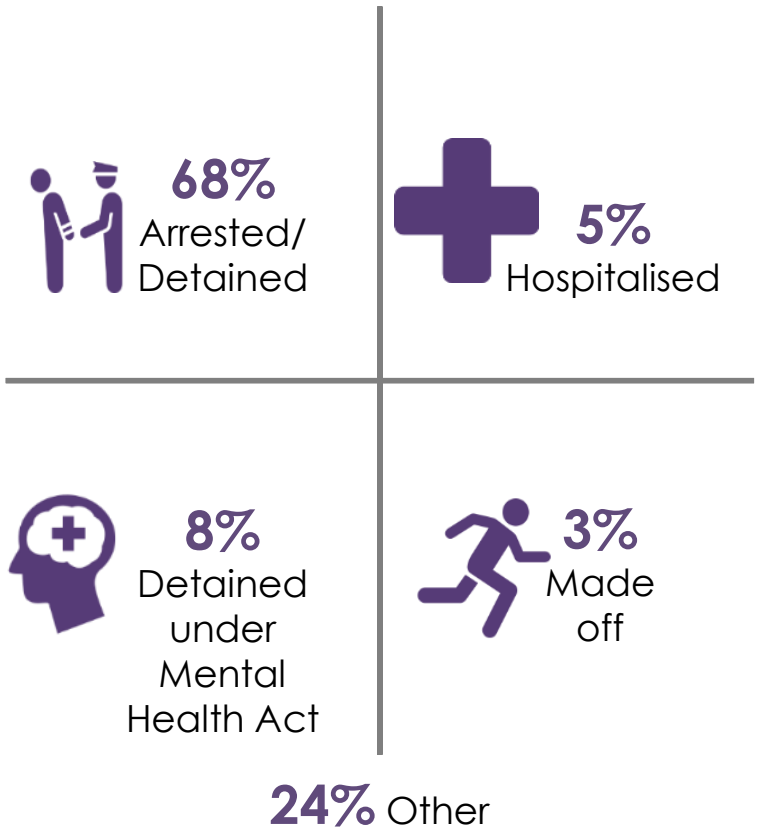
Medical assistance offered

| | |
|-----------------|------------------|
| No 19 | Yes 59 |
|-----------------|------------------|

Medical assistance provided

| | | | |
|-----------------|-----------------|-----------------|------------------|
| No 18 | Yes 1 | No 14 | Yes 45 |
|-----------------|-----------------|-----------------|------------------|

Outcomes



No incidents resulted in a fatality