



BRITISH
TRANSPORT
POLICE

Safer station safer journey

The Neighbourhood Policing Newsletter

Docklands Light Railway
Neighbourhood Policing Team



In this issue

Issue 6 Spring 2010

New sergeant in town
Page 2

Santas on the Run
Page 2

Meet the team
Page 3

Revenue arrests
Page 4

Lost child found safe and well
Page 4

Life saved by joint working
Page 4

**“We reduced
crime by 27%
compared to
last year”**

Crime reduced over festive period thanks to Op Holly

Through December and the festive period the Neighbourhood Policing Team (NPT) and Neighbourhood Support Teams (NST) at Poplar station took part in Operation Holly on the DLR in order to try and reduce the number of staff and public assaults. The teams also looked for any drunk and disorderly behaviour on the railway, increased their visibility to the public and to staff to help reassure them during the festivities. Final results from Op Holly show a 27% reduction in crime from 2008 and there were also several good arrests made by officers covering the operation.

Op Holly saw the Poplar officers all pitching in and extending their shifts to cover the extended opening times of licensed premises in the area and the close of service on the DLR. Many officers gave up time with their families to ensure adequate cover was available for the operation and the crime stats show the difference the officers made.

The NPT also came up with a local initiative. They designed a BTP beer mat (right) to distribute to the local pubs and bars around the DLR promoting safety on and around the stations and warning of the

repercussions of too much alcohol during the festive period. Local bars and restaurants welcomed the idea and hoped it would help their customers remain safe after a good night out.

Are you getting the train home peacefully, or do you want to come back to our place?



BRITISH
TRANSPORT
POLICE

Anti-social and criminal behaviour will not be tolerated on the railway

www.btp.police.uk

0800 40 50 40

Thinking of your train journey home? We are.



BRITISH
TRANSPORT
POLICE

Get home safely

- Be aware of your surroundings.
- Don't advertise your valuables to thieves.
- Stand away from the platform edge.
- If you need assistance speak to a member of staff or use the help points.

www.btp.police.uk

0800 40 50 40



0800 40 50 40 or visit www.btp.police.uk

There's a new sheriff in town



Sergeant Kamal Khan has recently joined DLR's Neighbourhood Policing Team. We caught up with him to find out more about him and his hopes for the future.

Kamal has a degree in mathematical science and had various professions prior to joining British Transport Police. He has been with BTP for ten years and a sergeant for four. He has worked at various police stations over the London Underground Area.

This is the second time he has supervised a Neighbourhood Policing Team and is again looking forward to the challenge.

PS Khan said: "NPT gives you the opportunity to take ownership of your area and work with other agencies to make a difference. With an expanding railway and the Olympics soon to arrive I am looking forward to the challenges. I'll be working with, and learning from a great team"



NPT's restorative justice

Poplar NPT is leading the way forward in youth justice and has been running the Docklands Youth Intervention Project for over a year. The project takes a two-pronged approach to reducing youth offending, firstly through prevention, by educating young people on the dangers and consequences of trespass and route crime.

The second way is by carrying out extra work with young offenders in partnership with TfL's Junior Citizenship Scheme to reduce re-offending. This involves meeting with offenders and discussing what led them to walking on the tracks or stone throwing.

After this stage it may be determined that further work needs to be undertaken and the offenders are educated on a one-to-one basis about the dangers.

PC Everett said: "In all my years as a BTP officer this is the most positive thing I have been involved in. It empowers young people to stand up to peer pressure and make informed decisions. It stops them re-offending not because they may be caught but because they know it's dangerous."

This restorative justice work is an 'add-on' to any outcome of the investigation and not a punishment replacement.

Santas on the Run

Four members of the DLR Neighbourhood Policing Team took part in a charity race called Santa's on the Run during December. This involved dressing up in red Santa Claus outfits and completing a 2Km run along London's South Bank. The four members were PC Bromley, PC Baker, PC Everett and PCSO Subron alongside PC Bromley's brother. These five Santas raised £1,810 for Richard House, a local children's hospice based in Beckton who provide care and support for life limited children.

The event was very well attended and two races of approximately 150 Santas each completed 2km course.

After the race had finished PC Everett said: "This was a very enjoyable event, although it was very cold. It was a quite a sight to see so many Santas in one place, and great to see so many people running for their chosen charities".

PC Bromley added: "This is a great local charity, which we helped in the past. It is a fantastic achievement for us to rise over £1,800 and we would all like to thank everybody that donated to such a worthy cause."



0800 40 50 40 or visit www.btp.police.uk

Meet your local DLR Neighborhood Policing Team



PS Kamal Khan
07545 201145



PC Luke
Rasdall
07850 233921



PC Matthew
Baker
07912 297342



PC Daniel
Bromley
07912 297932



PC Darren
Everett
07595 964535



PC Gavin
Fillary
07850 232423



PCSO Ellis
Fitzgibbon
07595 964536



PCSO Daren
Butt
07545 201137



PCSO Amanda
Wood
07545 201135



PCSO Kishan
Subron
07545 201136



PC Matt
Collins
07850 232230

Partners and Community Together (PACT) meetings

These meetings are intended to give the community a chance to highlight issues that are having an impact on their quality of life, and to assist in deciding which issues are dealt with as priorities.

PACT meetings are held on the last Friday of every month at the British Transport Police station, 212 Poplar High Street, London, E14 0BB at 1pm. Interested attendees should contact PS Kamal Khan on 020 7363 9582 prior to attending.

Community Surgeries

The team holds Community Surgeries to discuss individual issues and concerns. Come and meet your local Neighbourhood Policing Team:

At Canary Wharf DLR Station (first Friday of every month) – 4.30 to 6.00pm

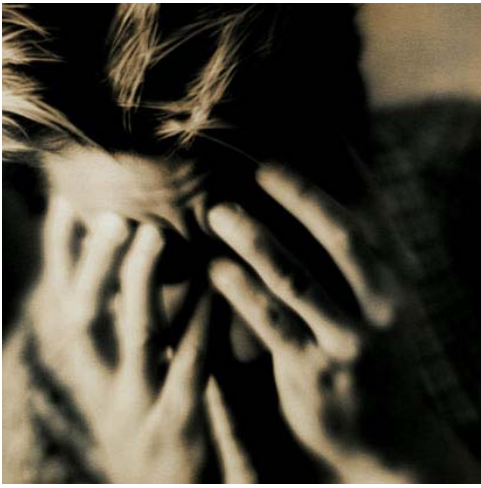
At Tower Gateway DLR Station (second Thursday of every month) – 7.30 to 9.00am

At Canning Town DLR Station (third Wednesday of every month) – 9.00 to 10.30am

At Woolwich Arsenal DLR Station (fourth Tuesday of every month) – 5.30 to 7.00pm

Visit our website: www.btp.police.uk/neighbourhood_policing/london_underground__dlr/dlr_npt.aspx

0800 40 50 40 or visit www.btp.police.uk



Life saved by partnership working

Officers from the Neighbourhood Policing Team attended All Saints Docklands Light Railway Station early in the morning due to reports of a distressed woman threatening to throw herself on the tracks.

The woman was indeed very distressed and also in an extremely dangerous position above the tracks where there is a triple risk of injury either from falling, electrocution or being struck by a train. The station was cordoned off immediately and trains halted. After around 45 minutes the female was calmed down by officers and taken to hospital although she sustained no significant injuries.

Ongoing work is being carried out by the NHS and BTP to support the woman. BTP Poplar now has an officer who is responsible for contacting external mental health agencies.

This positive outcome was a good reward for all involved as it was a team effort between British Transport Police, DLR staff, Metropolitan Police and the Fire and Ambulance Service and could have easily ended in serious injury or loss of life.

DLR is no place to hide

Neighbourhood Policing Team officers took part in a revenue initiative at Westferry Docklands Light Railway station recently. During the operation two people were arrested, one by PC Matt Baker for suspected theft of identification cards and the other by PC Dan Bromley on someone wanted for non-payment of fines. Both arrests were made after initial stops by revenue staff where individuals had given details which could not be verified.

For the first arrest, after showing very suspicious and furtive behaviour a woman was searched which resulted in her being found in possession of three different identity cards. She was arrested and taken to custody. PC Matt Baker said: "The close working relationship we have with our partners on the DLR has again paid off. The NPT at Poplar take great pride in our strong partnerships and this shows how effective it can be."

For the second arrest, PC Dan Bromley stepped in and by using his PDA obtained the man's correct details. The result indicated that the man was in fact wanted. He was soon arrested for non-payment of fines and taken to court.

PC Dan Bromley commented: "These arrests show that in working with revenue staff we can take offenders off the street. The railway system is not a safe place for criminals to hide."

Lost child found safe and well

On a recent cold evening while carrying out a foot patrol, two officers, PC Gavin Fillary and PC Justin Atkins were approached by a mother who had become separated from her son while on their way to the O2 in Greenwich to watch a concert.

Both officers took information from the mother and quickly disseminated it through both the DLR control and the BTP control room. The boy had minor learning difficulties, no money, no mobile phone and would be unlikely to know what to do for the best as he didn't know the area and had never travelled on the railway on his own before.

At this stage it was unclear if the boy had got off the train or had been caught on the train when the doors had closed due to crowding on the platform.

PCs Fillary and Atkins contacted other Docklands officers to attend

Canary Wharf and travel down the line towards Lewisham where the original train had been heading, checking all stations en route.

Further officers were deployed to look for the boy across the network as concerns grew. After almost three-and-a-half hours, and the parents distraught, the boy was located on a train at Gallions Reach DLR station. He was collected by officers and returned to his parents safe and sound.

The family have since sent a letter of thanks into all who helped with finding her son but with special thanks to both PC Fillary and PC Atkins whose professionalism was commended.

PC Fillary said: "We were all concerned about the lad and did all we could to find him. Finding him safe was the only reward we wanted, but it was really kind for the mother to put her appreciation in writing."