



BRITISH
TRANSPORT
POLICE

Safer station safer journey

The Neighbourhood Policing Newsletter

Docklands Light Railway
Neighbourhood Policing Team



In this issue

Issue 8 Autumn 2010

*Local initiative at Island
Gardens and Langdon
Park*
Page 2

*New pickpocket DVD for
staff*
Page 2

*World Cup 2010 beer mat
campaign welcomed*
Page 2

BTP clean up for hospice
Page 3

You say, we do....
Page 3

Meet Your DLR NPT
Page 4

**“Knowing that
passengers can
now purchase a
ticket without
fear of losing
their money is
very satisfying”**

Ticket vending machine crime sees drop after joint work with BTP and Serco

Officers on the Poplar Neighbourhood Policing Team (NPT) and Neighbourhood Support Team (NST) have, with the help and co-operation of the Docklands Light Railway (DLR) Serco, put an end to ticket vending machine (TVM) thefts.

Since the new style TVMs were installed passengers had been losing money in the coin chutes due to them being blocked by criminals who come back and retrieve the lost money.

Since February 2010 NPT officers at Poplar have had a Problem Solving Plan (PSP) up and running to reduce the number of TVM thefts on the DLR. After six months in July the PSP was signed off with an 80% reduction in thefts.

After 47 arrests, one four month prison sentence, a two year anti-social behaviour order (ASBO) not to enter the DLR, a 12 month community order not to enter the DLR and court costs and penalties issued, the worst offenders got the message that the DLR and BTP will not give up until offenders are punished.

“Knowing that passengers can now purchase a ticket without the fear of



losing their money is very satisfying,” said PC Matt Collins. “We have spent months working together with the DLR to solve this problem so it’s a relief to finally know it has been dealt with.”

In June 2010 DLR Serco rolled out a new modified coin chute for the TVMs which incorporates a shutter, if any blockages are detected by the machines the shutter will close and will not re-open until a technician has been and removed the block.

PCSO Ellis Fitzgibbon said: “We have not received a single call relating to TVM thefts through the whole month of June or since the modifications have taken place.

“It’s great news for us and the DLR as this has been a big problem and a priority for BTP.”



0800 40 50 40 or visit www.btp.police.uk

New pickpocket DVD for staff

Neighbourhood Policing Teams have a new weapon against crime – a DVD highlighting the problem of pickpocketing.

L Area's blitz on pickpocket crime, Operation Silence, is already reaping rewards – offences so far this year are down 13% compared to last year, which means 238 less victims.

Now there is a DVD that is on the LU intranet for Tube staff to watch.

Titled *Pickpockets on the Tube*, the five minute long film explains the extent of the problem, what BTP are doing about it, common pickpocketing techniques and how staff can help.

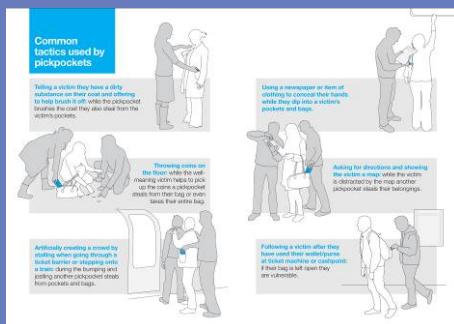
By reporting suspicious behaviour to police and alerting vulnerable people – those who have left their bag open for example – staff can make a difference and help reduce crime on their station.

Officers have also been handing out a leaflet which also explains the tactics used by pickpockets.

If you would like a copy of the leaflet or to speak to a BTP officer about pickpocketing, please contact the DLR Neighbourhood Policing Team using the details on the back page.

“He literally just reached round in front and took the wallet out of my bag.”

Pickpocket victim Julia Dixon



Local initiatives at Island Gardens and Langdon Park

BTP and the Metropolitan Police recently teamed up for two operations on and around both Island Gardens and Langdon Park DLR stations.

Poplar NPT and NST, along with Millwall Met Safer Neighbourhood Team (SNT) joined together for a high visibility operation at Island Gardens to coincide with the end of school term at George Green School opposite the DLR station.

BTP operated on the DLR station along with revenue inspectors to make sure all passengers and youths were travelling with valid tickets and in an appropriate manner.

The Met operated a high visibility patrol around the streets and Millwall Park. No arrests were made on this operation but revenue inspectors issued several tickets to non paying travellers on the DLR.

Poplar NPT and NST also conducted another smaller initiative a week later at Langdon Park DLR station.

This however was conducted later in the evening and after schools had started their summer holidays.

The aim of the operation was to help combat previous problems at the location with trespassing, stone throwing and anti social behaviour.

No problems occurred during this operation and no arrests were made. High visibility patrols will be on going throughout the school holidays and links with the local forces will also help officers identify problem offenders that may come to light and deal with them accordingly.



World Cup 2010 beer mat campaign welcomed

Following the success of the Operation Holly in 2009, a World Cup 2010 beer mat campaign at pubs and bars in Canary Wharf and West India Quay was launched.

The NPT team at Poplar designed the beer mats to warn passengers of the consequences they face from drinking too much alcohol during the World Cup football matches.

Local pubs and bars with TV's screening the matches welcomed the initiative.

PC Everett said "Although the

campaign talks about the England football team, we hoped it would reach supporters of all teams competing in the World Cup as there are such a diverse range of people drinking in the pubs and bars in this part of London."



BTP clean up for hospice

Poplar NPT officers once again pulled out all the stops during the Capital Clean Up Campaign and teamed up with Richard House Hospice in Beckton to assist in the restoration of their memorial gardens.

PCSO Daren Butt said: "We have a close relationship with the hospice already from previous fundraisers so when we called about this they were thrilled.

"The hospice was due to have a memorial service in the gardens for some of the families of the children that had passed away and they had been let down by a corporate company so our timing could not have been better."

The officers spent two days at the hospice weeding, cutting back bushes, jet washing walkways and deep cleaning the memorial garden and its fountain.

"The water feature needed some work done as it hadn't been cleaned for a number of years. I took it upon

myself to dismantle the pump to clean it and somehow I managed to get it put back together and it worked. Who'd have thought I had hidden skills," joked PC Dan Bromley.

After two days hard work, with dirt in their fingernails and mud on their knees, the officers handed back the gardens to delighted staff at the hospice.

Manjeet Boparai, a community fundraiser at Richard House Hospice, said: "We are so grateful to the officers for their help.

"The fountain in the gardens being fixed is very important for us.

"It benefits our visually impaired children who may not be able to see the feature but they can certainly hear it now it's working to its full potential.

"The family support management services also send their thanks for a fantastic job done."



You say, we do

The public said...

There are vast amounts of tourists travelling through Cutty Sark DLR station who are concerned about pickpocketing, can something be done to address this problem?

BTP did...

Crime prevention stalls were held there where officers handed out leaflets and advice to passengers travelling on the DLR about how to keep their items safe. Passengers with open bags had it pointed out and advised on how to make theft of their belongings as difficult as possible.

The public said...

There are large groups of youths congregating outside Shadwell DLR station in the evening. There aren't any staff and it is intimidating. Can this be addressed?

BTP did...

Officers checked the station and concourse area late at night while providing a high visibility patrol. The local Met police were contacted to help as no problems had been reported to them. The DLR has Travel Safe Officers (TSOs) on train and station patrols during the whole day while the DLR is running services but nothing was reported by them either. High visibility patrols are a day to day occurrence of Poplar NPT officers so we will be keeping an eye on the station in question, working with the Met and TSOs.

Forging boxing links in Poplar

PC Mel Finch has recently formed a close partnership with Poplar Youth and Boxing Club by helping out with their training. The club is run by the local youth working team and is one of the few places in the area where youths from all diverse cultures, religious and ethnic groups mix socially. It will shortly be moving to Langdon Park School and will be running the same hours from their premises.

PC Finch is a qualified ABA boxing coach and offered his services to the club back in May as they only had one coach and has been helping out ever since, and is really enjoying spending time training the youths.

He said: "On Friday evenings I coach both junior and senior classes. Boxing teaches discipline, respect and keeps them out of trouble.



"Working at the club has enabled me to build relationships with both the teenagers and the youth working team.

"It enables them to see a police officer in different way than seeing me on the street."

0800 40 50 40 or visit www.btp.police.uk

Meet your local DLR Neighborhood Policing Team



PS Kamal Khan
07545 201145



PC Luke
Rasdall
07850 233921



PC Matthew
Baker
07912 297342



PC Dan
Bromley
07912 297932



PC Darren
Everett
07595 964535



PC Gavin
Fillary
07850 232423



PCSO Ellis
Fitzgibbon
07595 964536



PCSO Daren
Butt
07545 201137



PCSO Amanda
Wood
07545 201135



PCSO Kishan
Subron
07545 201136



PC Matt
Collins
07850 232230

Partners and Community Together (PACT) meetings

These meetings are intended to give the community a chance to highlight issues that are having an impact on their quality of life, and to assist in deciding which issues are dealt with as priorities.

PACT meetings are held on the last Friday of every month at the British Transport Police station, 212 Poplar High Street, London, E14 0BB at 1pm. Interested attendees should contact PS Kamal Khan on 020 7363 9582 prior to attending.

Community Surgeries

The team holds Community Surgeries to discuss individual issues and concerns. Come and meet your local Neighbourhood Policing Team:

At Canary Wharf DLR Station (first Friday of every month) – 4.30 to 6.00pm

At Tower Gateway DLR Station (second Thursday of every month) – 7.30 to 9.00am

At Canning Town DLR Station (third Wednesday of every month) – 9.00 to 10.30am

At Woolwich Arsenal DLR Station (fourth Tuesday of every month) – 5.30 to 7.00pm

Visit our website: www.btp.police.uk/neighbourhood_policing/london_underground__dlr/dlr_npt.aspx

0800 40 50 40 or visit www.btp.police.uk